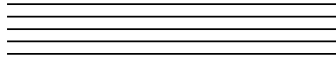



## GRADES 3 &amp; 4 MUSIC TEST (revised 1/06/10)

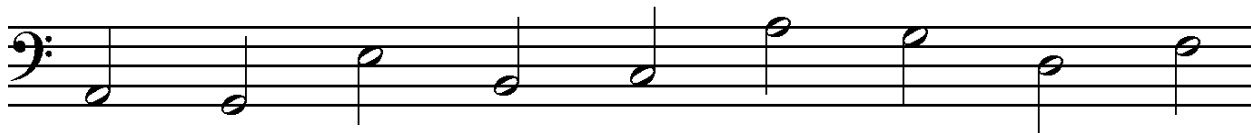
Name \_\_\_\_\_ **STUDY GUIDE** \_\_\_\_\_ Date \_\_\_\_\_1. **nothing** \_\_\_\_\_ What does the direction of the stems on the notes mean?2. **up** \_\_\_\_\_ Does the following melody go up or down?3. **leap** \_\_\_\_\_ Is this interval a step, leap, or same?4. **step** \_\_\_\_\_ Is this interval a step, leap, or same?5. **staff** \_\_\_\_\_ What is this named?6. **sharp** \_\_\_\_\_ What is the symbol to the left of the notehead?7. **flat** \_\_\_\_\_ What is the symbol to the left of the notehead?8. **natural** \_\_\_\_\_ What is the symbol to the left of the notehead?9. **flat** \_\_\_\_\_ On a keyboard, what sign tells the performer to change from playing a white key to the black key to the left?10. **sharp** \_\_\_\_\_ On a keyboard, what sign tells the performer to change from playing a white key to the black key to the right?11. **natural** \_\_\_\_\_ What means to cancel the sharp or flat and play a white key instead?12. **treble clef or g clef** \_\_\_\_\_ What is this called?12B. **treble clef or g clef** BONUS FOR #12: What else can this be called?13B. **bass clef** \_\_\_\_\_ What is this called?14. **key signature** \_\_\_\_\_ What is the cluster of flats or sharps at the beginning of each staff called?

Identify the names of the following notes on each staff using the letters “a” through “g.”



A musical staff with a treble clef containing nine notes. From left to right, the notes are: F4 (first space), E4 (first line), C4 (below the staff), G4 (second space), A4 (second line), F4 (first space), E4 (first line), B3 (below the staff), and D4 (below the staff).

f    e    c    g    a    f    e    b    d  
15    16    17    18    19    20    21    22    23



A musical staff with a bass clef containing nine notes. From left to right, the notes are: A3 (below the staff), G3 (below the staff), E3 (below the staff), B2 (below the staff), C3 (below the staff), A2 (below the staff), G2 (below the staff), D2 (below the staff), and F2 (below the staff).

a    g    e    b    c    a    g    d    f  
24B    25B    26B    27B    28B    29B    30B    31B    32B